



Southfield Road, Bradford, West Yorkshire, BD5

- TWO BEDROOM TERRACED HOUSE
- DOUBLE GLAZING AND CENTRAL HEATING
- ON STREET PARKING
- UNFURNISHED
- COUNCIL TAX BAND- A
- IDEAL FOR PROFESSIONALS, COUPLES OR FAMILIES
- FIXED DEPOSIT: £801.00
- AVAILABLE: NOW
- EPC RATING- E
- LOCAL AMENITIES, SCHOOL AND TRANSPORT LINKS WITHIN THE AREA

£695 Per Month - Deposit £801



Southfield Road, Bradford, West Yorkshire, BD5

DESCRIPTION

This two-bedroom terraced house is available **to let** in Bradford, offering practical accommodation in good condition, well placed for public transport links and local amenities.

The property comprises one reception room, a kitchen and a bathroom, providing a straightforward layout suited to families, professionals and couples. On-street parking is available. The home falls within Council Tax Band A and has an EPC rating of E.

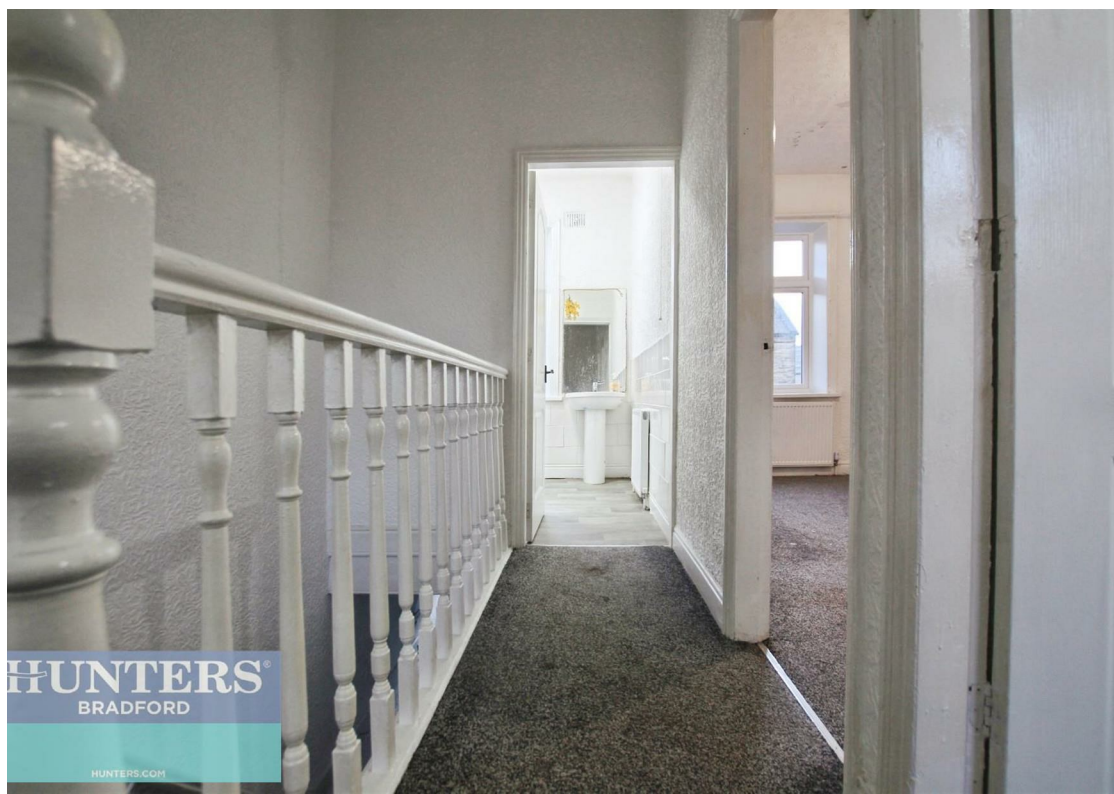
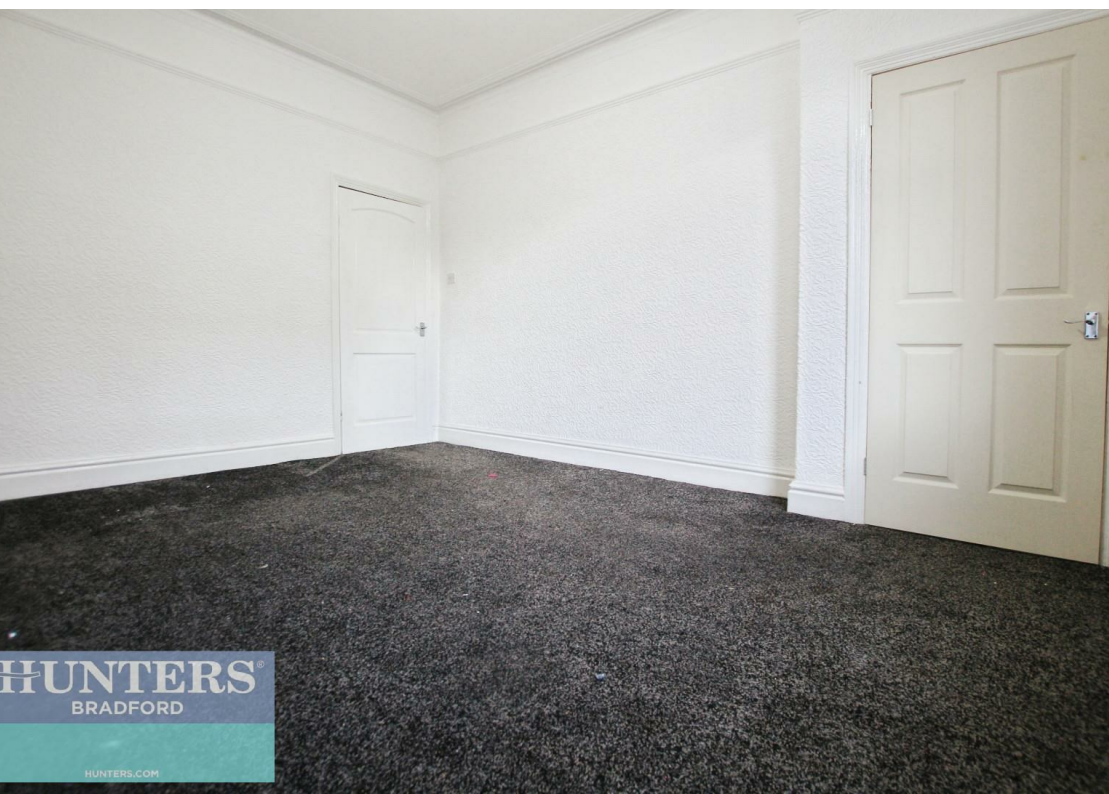
Located in the BD5 area, the house is convenient for Bradford city centre, with access to a wide range of shops, supermarkets and services. The area benefits from nearby parks and open spaces such as Horton Park, which offers green areas for walking and recreation. Local primary and secondary schools are accessible within the wider neighbourhood, making the location suitable for households requiring school access.

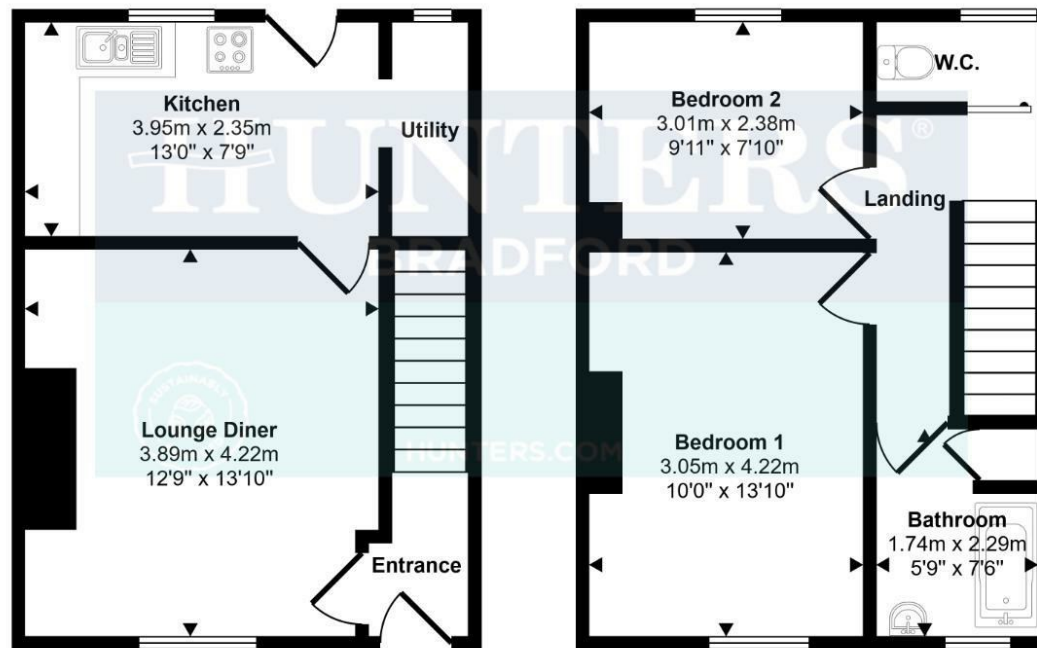
Public transport connections are a key feature, with regular bus services running towards Bradford city centre and surrounding districts. Bradford Interchange provides rail services to Leeds in around 20 minutes and to Manchester Victoria in approximately one hour, as well as further regional destinations, supporting commuting and leisure travel.

The location also allows access to Bradford's main shopping areas, cafés and restaurants, along with cultural venues in the city centre. Major road links, including routes towards the M606 and M62, are reachable by car, providing onward connections across West Yorkshire and beyond.

Overall, this two-bedroom terraced house to let presents a practical rental option in Bradford with access to public transport and local amenities.







This floorplan is only for illustrative purposes and is not to scale. Measurements of rooms, doors, windows, and any items are approximate and no responsibility is taken for any error, omission or mis-statement. Icons of items such as bathroom suites are representations only and may not look like the real items. Made with Made Snappy 360.

Viewings

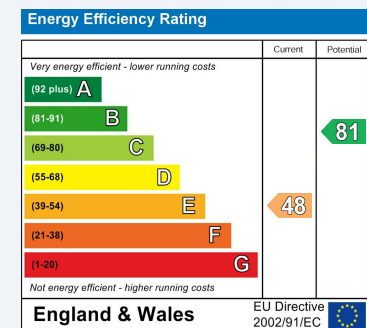
Please contact bradford.lettings@hunters.com, if you wish to arrange a viewing appointment for this property or require further information.

Valuations

For a valuation of your property, please email the team with your property details, contact information and the times you are available.

ENERGY PERFORMANCE CERTIFICATE

The energy efficiency rating is a measure of the overall efficacy of a home. The higher the rating the more energy efficient the home is and the lower the fuel bills will be.



These particulars are intended to give a fair and reliable description of the property but no responsibility for any inaccuracy or error can be accepted and do not constitute an offer or contract. We have not tested any services or appliances (including central heating if fitted) referred to in these particulars and the purchasers are advised to satisfy themselves as to the working order and condition. If a property is unoccupied at any time there may be reconnection charges for any switched off/disconnected or drained services or appliances - All measurements are approximate.

THINKING OF SELLING? If you are thinking of selling your home or just curious to discover the value of your property, Hunters would be pleased to provide free, no obligation sales and marketing advice. Even if your home is outside the area covered by our local offices we can arrange a Market Appraisal through our national network of Hunters estate agents.